

# LUNCHTIME RECYCLING SORTING STATION



**LIQUIDS**  
Before recycling containers empty all liquids including water, milk, juice, soda, coffee and tea.

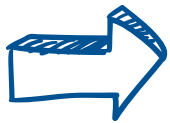
**RECYCLE**

<p><b>PAPER</b> Trays, boats, pizza boxes, cartons &amp; food boxes (food residue OK)</p>	<p><b>EMPTY food or liquids before recycling!</b></p> <p><b>PLASTIC</b> RIGID/HARD Plastic Only! Bottles, trays, cups, lids, clear containers, yogurt containers, cereal bowls, fruit cups, etc. (food residue OK)</p> <p>plastic tray</p>	<p><b>METAL</b> Aluminum cans, foil, bowls, trays &amp; metal soup cans, etc.</p> <p>Aluminum Foil</p>
---	--	--

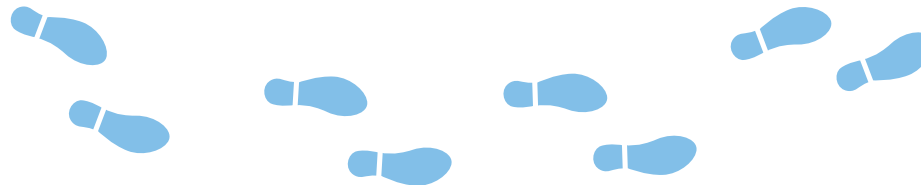
**LANDFILL**

<p><b>WRAPPERS &amp; BAGS</b> Plastic bags, chip &amp; cookie bags, food wrappers &amp; bags, etc. All "squishy" plastic.</p>	<p><b>SPORKS, STRAWS &amp; NAPKINS</b></p> <p>plastic utensils</p> <p>straw</p>	<p><b>TRASH THESE!</b> Paper &amp; foam cups &amp; plates, etc.</p> <p><b>FOOD</b></p>
---	---	--

Stack  
Trays  
Neatly



START HERE



**SDUSD**  
Recycles